

# **FLY-IN & OPEN DAY**

**Sunday 20th March 2022**

(Backup 10th April 2022)

**Old Tunbridge RAAF Airfield, Tunbridge**



**Complimentary Sausage Sizzle**

**Hangar Opening Ceremony**

**Get up close and personal with Gliders**

**Opportunity to talk with the Team**

**Special trial flights available on the day**

**Warbirds onsite**



Stephen Ross - mobile: 0447 518 223

Bob Kennedy - mobile: 0414 326 804

[www.glidingtasmania.org.au](http://www.glidingtasmania.org.au)

GLIDING TASMANIA



Tunbridge Tier road

Annandale

Fence line

RWY 28

RWY 32

500m

900m

RWY 14

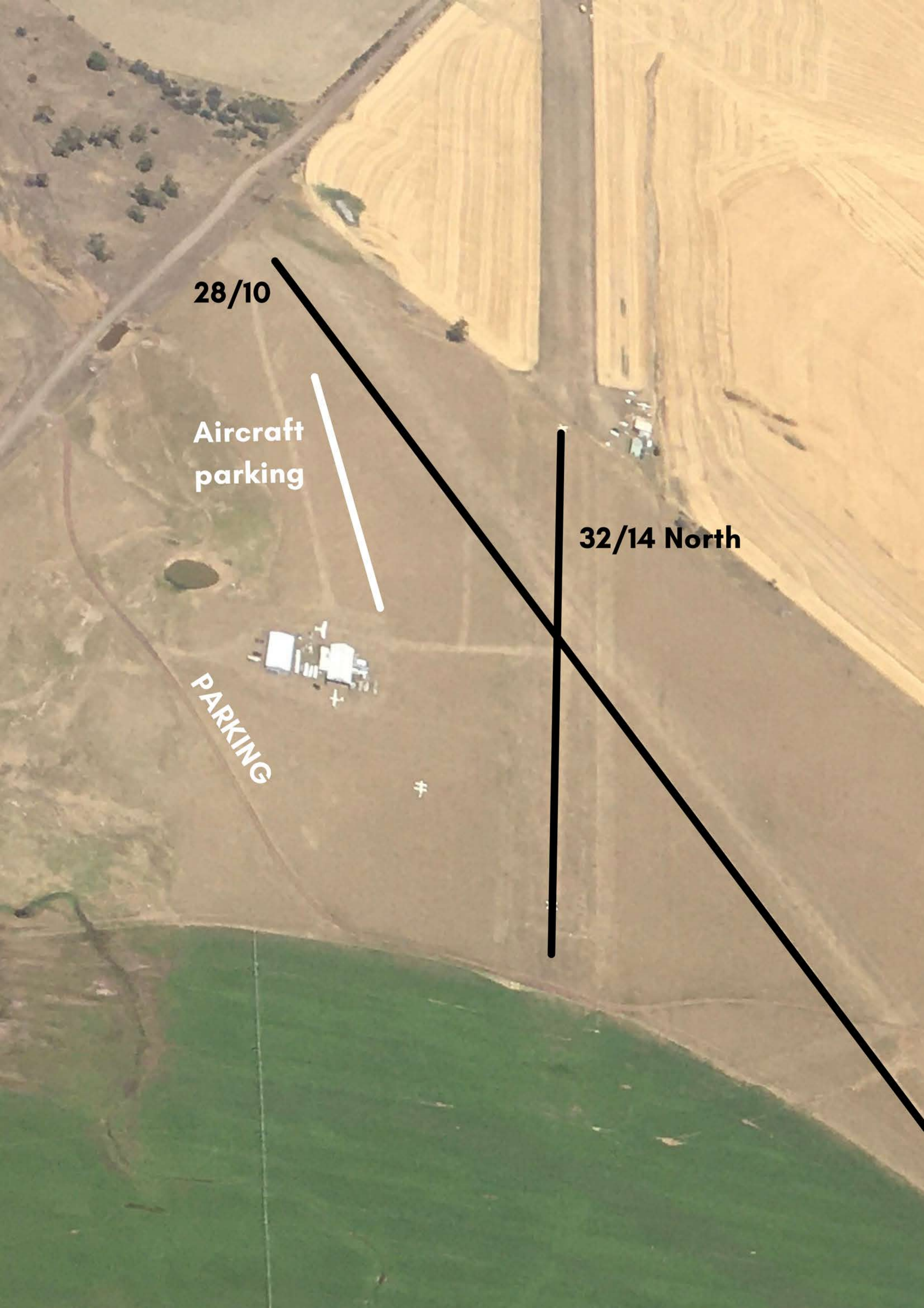
RWY 10

**28/10**

**Aircraft  
parking**

**32/14 North**

**PARKING**



- Use 126.7 Mhz and standard calls
- Beware - fence crosses 32/14. Use north only
- Runway 28/10 - 900m
- Runway 32/14 - 500m
- Runway surface is grass/gravel
- Right hand circuits Rwy 28
- Left hand circuits all other runways
- Gliders have right-of-way